

# EKC Update

June 11, 2021



EKCCU.COM

## EKC's NEW MEMBER SOLUTIONS CENTRE (MSC) IS NOW TAKING CALLS!

Doing business with EKC is becoming more convenient than ever! Last week, EKC representatives based in Cranbrook and Fernie began accepting member inquiries by phone through our new Member Solutions Centre.

The local, friendly representatives at the Member Solutions Centre are dedicated to assisting our members with over-the-phone requests. Once we complete our "test and training" phase, the MSC will offer extended hours, meaning you'll be able to access service by phone (and email!) beyond our regular branch hours.

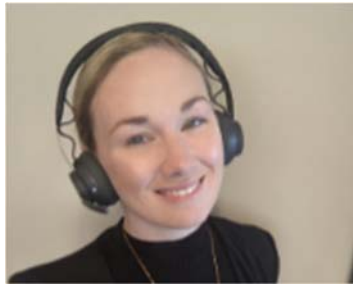
Things will sound a little bit *different* next time you call your branch, as our call directory has been updated. But you can count on getting the *same* excellent service you've come to expect from EKC when you speak with one of our MSC representatives.

Watch for more updates and bios of the Members Solutions Centre staff on our social pages and future updates.



### Meet Karla!

Member Solutions Centre  
Supervisor



### Meet Alex!



### Meet Dale!



**EKC's Spring Loan is still available! with rates starting at 2.99%\***

\* details at EKCCU.COM

## Looking Ahead - COVID-19

EKC is reviewing their plan based on the BC government's rollout plan. EKC's first steps will be to move staff back to their offices. We will keep you updated as EKC makes further changes. [Link to the BC government plan.](#)

Learn more about **personal** mortgages, 'Best Thing Local' contest and referring others for an EKC mortgage, [click here.](#)



Learn more about **commercial** mortgages, 'Best Thing Local' contest and referring others for an EKC mortgage, [click here.](#)



## EKC Supports Outdoor Learning in the East Kootenay

Taking students outside to learn is more important than ever, not just for reducing potential transmission but also for their mental, physical and emotional health.

EKC **donated \$8,000** to Columbia Basin Environmental Education Network (CBEEN) to purchase 16 customizable classroom kits for all elementary schools in Cranbrook, Jaffray, Fernie, Elkford and Sparwood.

Pam Pinch, EKC Lead on the donation, worked with principals, CBEEN and Outdoor Learning Store to ensure students had something to look forward to this spring. Branch managers were able to connect their team members with schools for the delivery of the funds, ensuring students could use the fun, new equipment before the end of the 2020-2021 school year.

EKC branch managers and teams were able to get some first-hand views on how students were participating in outdoor education.

EKC was proud to work with CBEEN in this timely initiative.



Do you want to become part of something bigger, not just something big?  
Join our team.  
EKCCU.COM

## As EKC grows, we are looking to add people to our team!

EKC offers:

- a competitive compensation package
- paid education
- full benefits & pension
- vacation time off
- development positions - (EKC will train the candidate with little or no banking experience to support advancement)

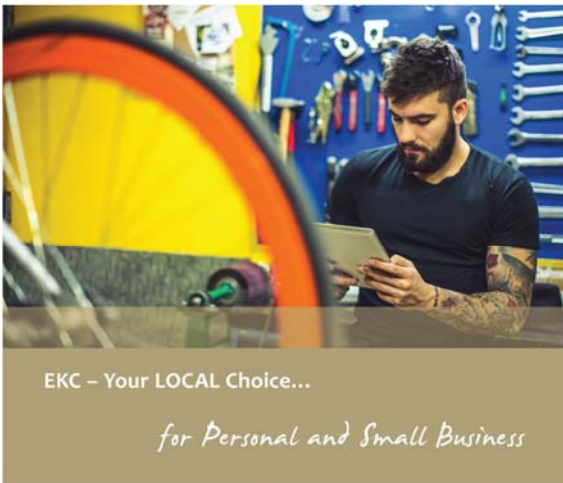
Please help us get the word out. Positions are listed on our [website here](#).

## Congratulations to the 6 Winners for the "Eat Local- Support Local - Enjoy Take Out' Contest!

EKC gave away \$300 worth of gift certificates to help support local restaurants, as several of them are EKC members!

Congrats to the 150 people who posted and Janet, Desiree, Charmaine, Verlee, Rima and Jodi for each receiving a \$50 member gift certificate!

Love Local!



EKC – Your LOCAL Choice...

*for Personal and Small Business*



- ▶ Receive up to \$500 for a new mortgage referral\*
- ▶ Best Things Local Mortgage Contest valued at \$1,000\*
- ▶ new member perks

\*details at EKCCU.COM



## Local Credit Unions and Businesses Strengthen Our Communities

Local credit unions and local business connect and support members of the community socially and enhance wealth and employment by circulating dollars repeatedly between businesses

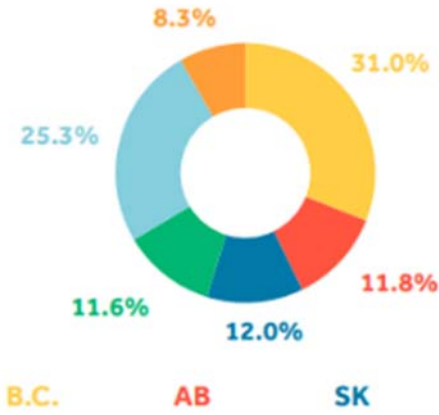
- Local retailers recirculate 63% compared to 14% for chains
- Local restaurants recirculate 68% compared to 30% for chains
- Local suppliers (office supplies) recirculate 33% compared to 19% for chains

Living Local - what can you do?

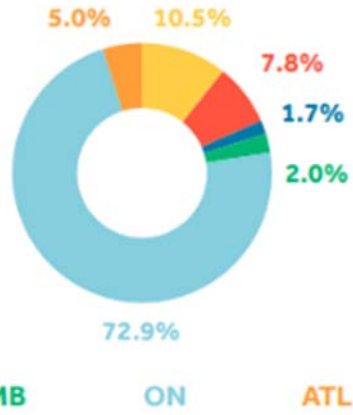
- Consider your purchases (could it be purchased locally by a local?)
- Start a business
- Sell what you make and grow
- Bank locally at a credit union – BC Credit Unions offer 11.6% of BC jobs compared to BC banks that offer 2.0% of BC jobs.

EKC grew from members who believed there was a better way to bank and continues to work in the best interest of its members. We understand the East Kootenay lifestyle and what it takes to succeed financially. We offer the same services as banks, but as a Credit Union, EKC is run on cooperative principles, using profits for your good. Profits go back to you, our members, and to the communities served. Together Credit Unions and small businesses support the financial growth and success of individuals and the community.

## CREDIT UNION JOBS BY PROVINCE



## BANK JOBS BY PROVINCE



Source: CCUA, Q4 2019 & CBA, 2017.

**HOW HEALTHY ARE YOUR FINANCES?**

**ARE YOU READY? FINANCIAL QUESTIONNAIRE**

[FIND OUT MORE>](#)

Please look at our online tools or book an appointment with our staff to get started!



During COVID-19 social distancing, all appointments will be via phone

**BOOK AN APPOINTMENT NOW!**

[FIND OUT MORE>](#)

## Is Your Credit Card Right For You?

EKC has a range of cards that may work for you.



[Apply Now](#)

## EKC Updates

EKC COVID -19 and safety plan are up to date and can be [found here](#).

Elkford and Sparwood staff are available to serve you by phone or email for all your banking needs when the doors are locked.

*Thank you for your continued patronage.*

To stay updated, check [Facebook](#), [Contact Us](#) or [EKCCU.COM](#).

